

**Tips & Trick: WiselImage makes a Raster Smart**

**Did you know that?**

With WiselImage (for AutoCAD, AutoCAD LT and Windows) you can edit your raster fast and efficient.

And, I do mean I, no need to redraw the scanned drawings, no need to convert it to vector format. Just select raster 'object' and change it's property.

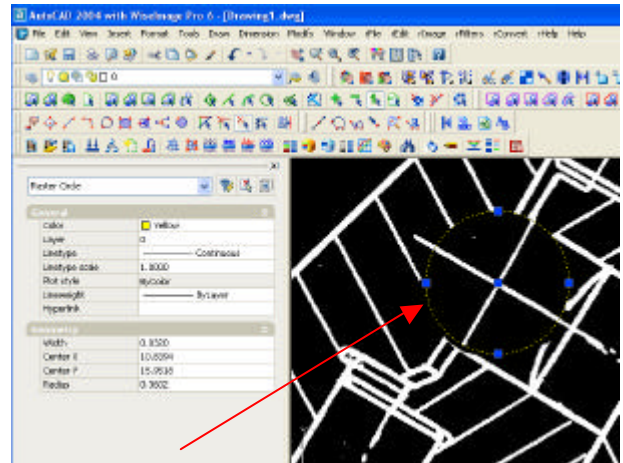
For example, you are considering small alterations on the existing image such as changing the circle diameter. Using WiselImage Raster Circle selection tool, click on raster circle, open the Properties Box and change the radius from 0.3602 to 0.25 (picture 1,2).

Now, you need to adjust all surrounding objects. Using Raster Selection tool, select raster lines and move them to a new position. Doing this operation you can use the Snap on Demand function to snap to the raster object (picture 3).

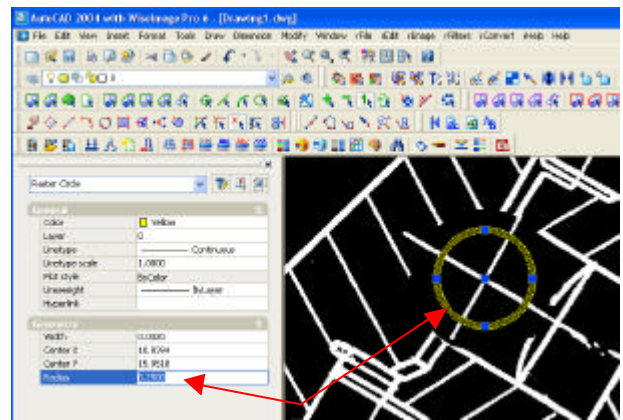
Next step, select raster arc using the forced selection of arc and stretch it by grips. Stretch the lines. What left is to repair the hatches. To correct the hatch, you can trace it with Raster Smooth mode on. Cross the hatch lines by fence.

As you could see, it took a few minutes to modify the Raster within WiselImage

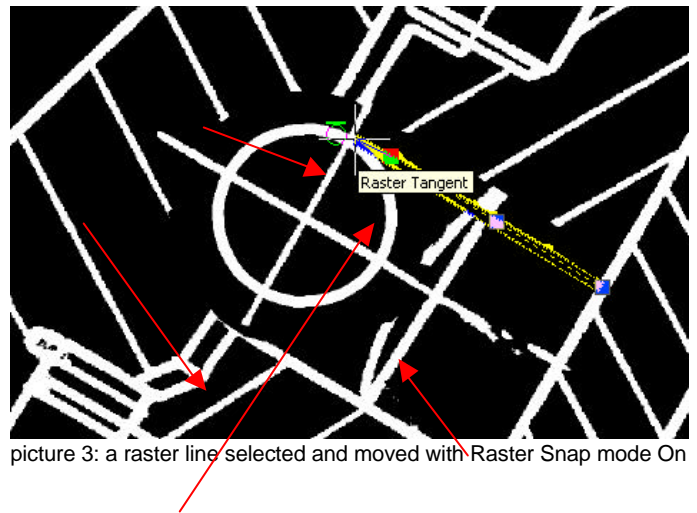
Before applying the changes to the raster, don't forget to tune the recognition parameters (the width of raster line and Accuracy) in R2V Conversion Options dialog.(picture 5).



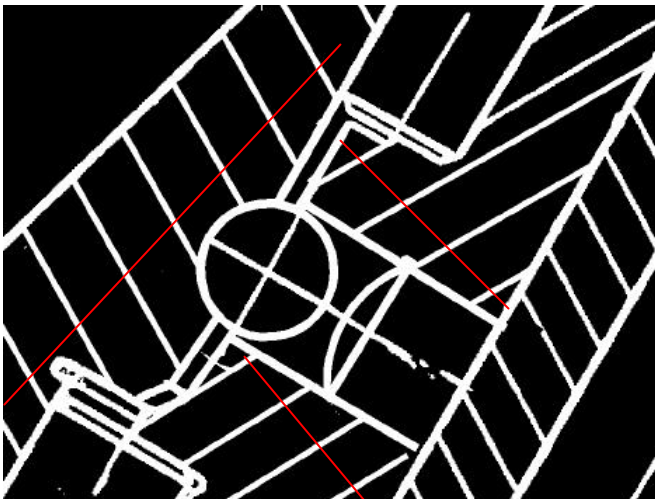
picture 1: original property of the selected raster circle



picture 2: changed property for raster circle



picture 3: a raster line selected and moved with Raster Snap mode On



picture 4:the hatch corrected with hatch tracing smooth mode ON.

